

LONG WHATTON AND DISEWORTH SCOUT GROUP

18TH ANNUAL REPORT APRIL 2014 TO MARCH 2015



...EVERYDAY ADVENTURE

Location: Long Whatton Methodist Church
Date: 5th June 2015
Time: 6:30pm for a 6:45pm Start



**Long Whatton and
Diseworth Scout Group**

AGM 2015 Agenda

1. GSL's Introduction
2. Attendance & Apologies
3. Election of Officers
 - Chair (GSL's Nomination)
 - Secretary
 - Treasurer
 - Parent Representative(s)
5. Group Chair's Address
4. Minutes of meeting / AGM 2014
5. Group Section Reports
 - Beavers
 - Cubs
 - Scouts
 - Explorers
6. Treasurers Report
 - End of Year Financial Report 2014/15
7. Date & Venue of the next Meeting

Notes:

**Long Whatton and Diseworth Scout Group
Group Scout Leaders Report April 2014 to March 2015**



Welcome to our 18th AGM !

Yes, Long Whatton & Diseworth Scout Group is 18 years old this year.

There have been previous groups in the village over the years 1920's, 1950-60's and early 1990's.

The group was reformed on 13th June 1997, we found the Cubs flag in the Parish Church and had a call from the previous Lord Crawshaw to say the Scout flag was hanging in his hallway, 'bring a screwdriver and you can have it back!' and the rest as they say 'is history!'

The group has grown in 'leaps and bounds' and now has 45 members including leaders and helpers, it is rumoured that this year we are the largest growing group in the county percentage wise.

Each section has increased in size and with this more leaders were needed. So new leaders were recruited, some who were members of the group as young people and have now taken on a leader role and some parents have become more involved as leaders or in a supporting role i.e. on the group committee.

We now have our own Group badge, designed with suggestions from the group members and embraced technology with our Facebook page, which enables quick communication with parents and members and shows our activities on a weekly basis.

Looking forward to the next year, we aim to continue to increase our numbers and to be able to have separate section meetings.

We are looking forward to our trip to Bavaria in August 2015 to meet our German Scout friends, attending Charnwood 2016, Leicestershire's International Scout & Guide camp being held at Whatton House, a possible summer camp to Wales in 2017 and hosting our German Scout friends in 2020.

I would like to take this opportunity to thank all the leaders and parents for their hard work and commitment to the group over the past year, which has enabled many more young people enjoy the 'Everyday Adventure' that scouting brings.

Jenny
Acting Group Scout Leader



**i.VOLUNTEER
WILL YOU?**

Ben

Long Whatton and Diseworth Scout Group Chairs Introduction



Firstly and foremost I want to thank everyone who has been involved in Long Whatton & Diseworth Scout Group, past and present, for their hard work and commitment given to Scouting. Without the support of adult volunteers, the group would not function as well as it does today.

As you know over the past year Scouting has grown within our group, which is exciting news. There are now five sections open to young people aged 6-18 and a Duke of Edinburgh Award meeting, that offer a wide range of activities, new learning experiences and above all, lots of fun.

Keeping up to date with the weekly programmes, activities, trips and the camping residentials, I have used the groups Facebook page, which has proven most useful as a method not only to see what we do, but to communicate with one another.

Being involved in Scouting also brings adult volunteers new opportunities, it enables individuals to develop themselves personally and professionally, building on confidence and push ourselves to new limits, which in return provides better Scouting opportunities for our children and young people.

It has been a pleasure to be a part of such an active scout group and I'm look forward to future of scouting within Long Whatton & Diseworth Scout Group.

Yours In Scouting

Darren Smith
Group Executive Committee - Chair



**Long Whatton and
Diseworth Scout Group**

BEAVERS

cubs

SCOUTS

EXPLORERS

DE LONG WHATTON AND
DISEWORTH SCOUT GROUP

**EVERY CHILD HAS THE
RIGHT TO AN ADVENTURE.**
Bear Grylls



**Long Whatton and Diseworth Scout Group
Oakley Beaver Colony – Mondays 3.30 to 4.30 pm at Long Whatton School
Annual Report April 2014 to March 2015**

The year started with this being our only colony, with over 12 members involved. The month began with the Colony gaining their level 1 First Aid Badge and ended with a treasure hunt, (Geocaching).

The church this year gave us permission to do Archery in the School Room and the Colony was invited to a Friday evening to take part.

The Colony was invited up for the afternoon to a joint camp we ran with Ashmount Scouts at Walesby Forest which also enabled them to take part in Jamboree in the Trail.

The Colony went on to really put the 'Out' in Scouting by having a go at trekking around the village, making catapults, hiking and cooking on trangias, taking part in a Mini Commonwealth Games and cooking on fires.

Summer Camp this year was at Willesley Scout Campsite near Ashby and the Beavers were invited to attend for one night and take part in loads of Activities with their bigger Scouting Family

There was also an opportunity to take part in Long Whatton Village Show and Diseworth Village Show.

Another opportunity for Archery presented itself and a Games Night was held of traditional scouting games, they also experienced a Fire and Craft afternoon as well as completing their Disability Awareness Badge, their Cycling Badge, their Healthy Life Style Badge, their Air Activities Badge and Community Badge! The year ended with Christmas Crafts and a group Ice Skating trip to Nottingham.

January 2015 saw the start of a new Friday early evening Piper Colony based at the Methodist Church, this enabled several members to move to this colony including leaders, this unfortunately saw a decline in numbers to five members on the Monday, however we still offered the best scouting we could during this session. The Show went on with Bird Feeders and Puppet Theatres performed in front of Parents.

The final month consisted of First Aid for the whole Group with everyone achieving either level 1, 2, 3 or 4.

Numbers for Oakley Colony are slowly increasing and the momentum carries on. It has been a great year of Everyday Adventure for the Colony and hopefully we will be able to continue into the foreseeable future. The School have given permission for the colony to have a notice board which will increase our visibility at the school and give us an opportunity to let other children see what we do.

Colin
ABSL Oakley Colony



**Long Whatton and
Diseworth Scout Group**



BEAVERS

Long Whatton and Diseworth
Oakley Colony



**Long Whatton and Diseworth Scout Group
Piper Beaver Colony – Fridays 5.15 to 6.15 pm at Long Whatton Methodist Church
Annual Report January 2015 to March 2015**



Long Whatton and Diseworth
Piper Colony

Piper Colony began in January 2015 based at the Church School room it has grown from eight young people to thirteen. On the opening night they had a go at Pionering Catapults. Later in the month there was a Visit from the Bloodhound Car Land Speed Record team which involved making model cars and an interesting talk.

They also took part in a night hike around the village and attempted to fit as many Beavers as possible into a phone box! The Colony also made bird feeders.

As a group we Celebrated Founders Day with Pancakes, investitures and the Beavers from both Colonies performed a Puppet Show. We had a massive turn out this evening and the place was packed with over 60 people knocking about.

Again the Colony was involved in First Aid along with the rest of the Group with everyone achieving either level 1, 2, 3 or 4.

Piper Colony also helped Oakley Grange Farm with tree planting in a field in Hathern down Pasture Lane.

So both colonies we hope will continue to grow, we have recently been lucky enough to receive a grant from East Midlands Airport to be able to buy Colony Flags, we are planning a summer camp in the UK and will continue to offer Everyday Adventure to our eighteen Beavers across two colonies.

There was a little confusion for a while over the names of the colonies and we have now settled with Oakley for Monday and Piper for Friday.

Colin
ABSL Piper Colony



**Long Whatton and
Diseworth Scout Group**





April to September 2014

During this period we only had two cubs, when our original Cub Pack closed, because of leaders leaving we decided to have them join in with the few Scouts we had and operate an integrated Section, Cubs and Scouts meeting together. This worked and we managed to keep the young people we had in scouting and having a great time.

However at this point Carl agreed to be acting Cub Leader and we had ago at separating the two sections. This gave the cubs the opportunity to complete their DIY badge and their IT level 1 Badge as a Cub Pack.

Cubs started to grow, just a little, by Summer Camp we had 3 who spent the week at Willesley with us and had a great time as part of the Family of Scouting. In September we were lucky enough to have Rebecca join us as a leader and things have picked up again!

Colin

Cub Sectional Assistant



Rebecca's Bit

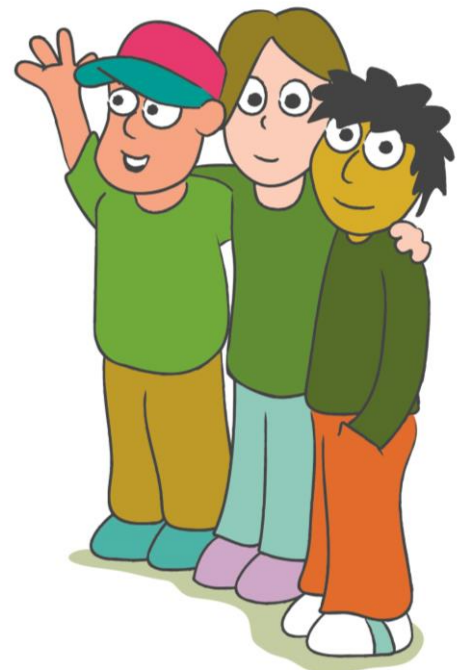
Having joined cubs in September and closely followed by Jess – we have been taking on the force of the cubs together. We now have 7 cubs 2 of which moved up from beavers, we also have Adam who from today will be officially in scouts.

Before Christmas

Some of the first sessions I attended with the cubs were archery and our trip to the climbing station. I was very impressed with cub's enthusiasm and skill level in both of these activities and it was great to see them all get stuck in.

We also took on the scouts and explorers in a Ready steady cook style smoothie competition. They were all challenged to create a smoothie using ingredients from a table and then come up with a logo and present their results to the judges and others. The cubs showed great team work and collaboration, listening well to each other's ideas and came up with some great artwork. This all led the cubs to a great victory.

In the session before we broke up for Christmas all 3 sections got crafty using different techniques to create some lovely Christmas cards for people in the village which were delivered by Colin and Jessica using addresses given to us by ex-explorer and villager Ellie Hampson along with her grannie Babs



After Christmas

A group session with people from the Bloodhound project organised by Nicolette which was enjoyed by all who took part in the model making. The week after saw some excellent tie-dye t-shirt designs and beautifully scented candles, which I hope made it home.

We then started with our run of badges which I'm sure all the parents who have sewed them on are thankful of. First looking at the old Global challenge badge which now translates into the Our World challenge badge, for this we looked at recycling and the charity Wateraid where the cubs created some posters I'm sure are still up in the church to see.

We saw some fantastic spaghetti and marshmallow towers during our teamwork evening and the cubs showed great teamwork and showed an excellent attitude towards continuous improvement by trying repeatedly to make a tower better than their last. This was all part of their My Skills badge which we will be doing more towards later on in the year.

First aid was another section badge we did with all the cubs completing their stage 1.

We then completed the Communications badge which included code breaking, semaphore and learning brail, the only thing left to do is a Jamboree on the Air which is set for October.

Home safety and air activities were next on the list, so if you saw your cub wandering around the house asking where the boiler was, or the radiator key then you now know why.

Other badges earned since September are the Book reader, hobbies and sports. If your cub has a particular hobby, sport or is a keen book reader then they are welcome to share with the others one evening.

We have attended one camp, being the district camp in May, which was Harry Potter themed. 5 Cubs attended sleeping under canvas for 3 nights. I think the biggest shock to them was the fact that they had to wash up after meals, so parents they can't use the excuse of they don't know how to anymore. We spent one day of camp at Conkers, where the cubs won their 'junior orienteering champions' certificates for doing an amazing job at the orienteering. I was really impressed how they encouraged each other and all pulled together to find the points across conkers, running the entire thing! From this they have expressed an interest in doing more orienteering and luckily my dad is somewhat of an expert. Back at camp on the activities day the cubs took part in a variety of activities including; archery, climbing, air rifle shooting, grass sledging, slack lining, backwoods cooking. All these activities go towards some of their challenge badges.

Rebecca

Cub Scout Leader



Long Whatton and Diseworth Scout Group
Scout Troop – Fridays 6.30 to 8.30 pm at Long Whatton Methodist Church
Annual Report April 2014 to March 2015



Well it all started with an Eggsciting time in April, with Egg and Spoon Racing, Egg Drops and Fires a good start to the new term. This was followed by Archery at the Church Hall, where the whole Group had a go.

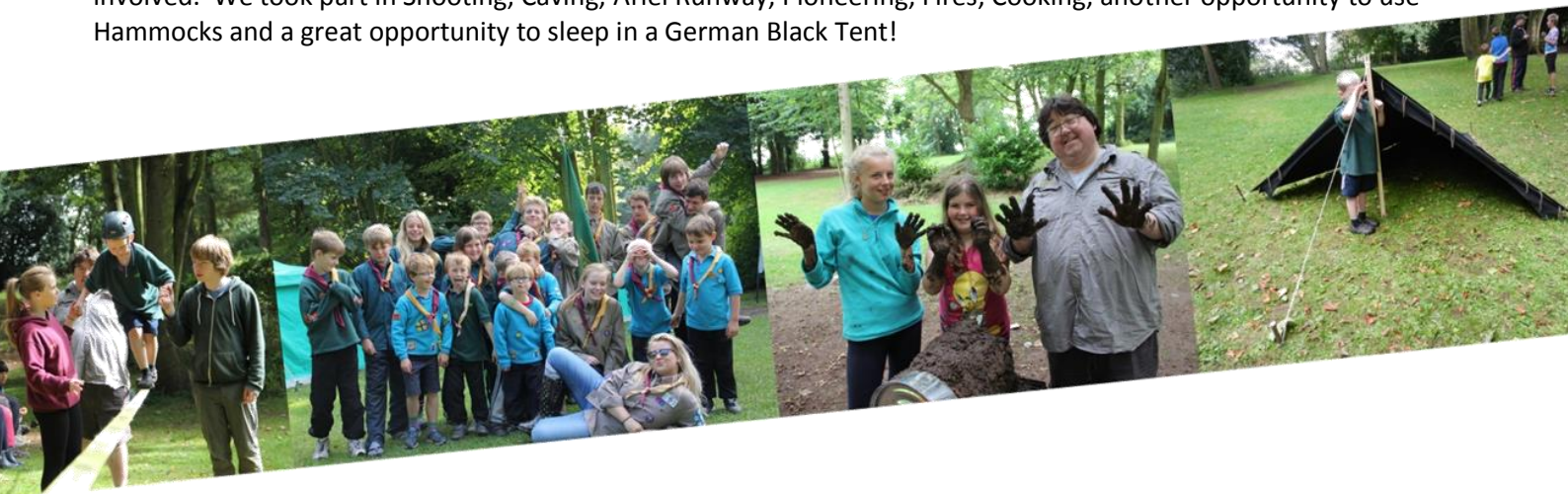
The Scouts went on an overnight experience with Ashmount Scouts to Walesby Forest, where they were joined by Cubs and Beavers to take part in Jamboree on the Trail. We also had a night clearing out the stores and filled a trailer full with rubbish, which just meant we could fill it with more stuff! Mini Pioneering and Catapults was an interesting evening of shooting film canisters at each other.

June saw us camping at Stonepit Wood Scout Campsite near Gotham for a camping trip with a difference, call it Survival Camp, Backwoods Camp which ever but in the end it was a Back to Basics Camp, cooking on fires, trying new recipes, sleeping in Hammocks under tarps, it was a great adventure!

With Summer Camp coming up it was time to do a couple of sessions on Camp Craft, we had many new members across all sections and many had not been on Scout Camp before, so we looked at Kit, Packing a Rucksack, Washing Hands, Cleaning Teeth, all very important stuff.

The summer term ended with a Party Night and Silly Games

August saw a final Games Night before Summer Camp at Willesley Scout Campsite at Ashby. This was a whole group camp and very enjoyable, it was great to see the Family of Scouting in operation and we had a very special visitor, Willi our German Scout Leader friend, it was great to see him and it is Willi's fault we are now planning Germany 2015. We also had a visit from the Group Scout Leader, Julie, from Ashmount Scouts and Ed who had been away working. So Summer Camp was a fabulous experience with I think 95% of the Group Members being involved. We took part in Shooting, Caving, Ariel Runway, Pioneering, Fires, Cooking, another opportunity to use Hammocks and a great opportunity to sleep in a German Black Tent!



All members also had the opportunity to take part in the Long Whatton Village Show, and we seemed to recruit a few people.

September saw the beginning of a New Term, so we started as we meant to go on; we made Mini Cross Bows from lolly pop sticks and shot matches into a fire in a vain attempt to light them. We also had a presence at Diseworth Village Show this month. As a group we had a go at Highland Mini Games and Archery, which is now a regular part of our programme. I nearly forgot there was a Pirates of the Caribbean Movie Night Sleep Over, with Fancy Dress and Pizza.

The Scouts had a go at pitching Light Weight tents along with the Explorers, Blind Football, which is a football with a bell in it, this was really only to amuse me, it was funny! On a more serious note the Scouts were involved in the annual cleaning and weeding of the Village War Memorial, we do this every year in memory of Ada Highton, who asked us one year to help as she was 'feeling a bit old to do it herself', after she passed away we continued on her behalf.



We attended the Remembrance Day Service for the Village and had our biggest turn out to date

We also managed a trip to the Climbing Tower in Loughborough and a Dragons Den Smoothie Making Competition.

Along with the rest of the Group the Scouts made Christmas Cards for people in the Village who were senior residents or residents living on their own. We delivered around 20 homemade cards for Christmas.

The term ended with an Ice Skating Trip to Nottingham.

After Christmas we had an unwanted present swap shop and a visit from the Super Sonic Car, the Bloodhound Project.

We introduced some new crafts, Scented Candles and Tie Dying and we had some amazing results.

February saw the Scouts finishing their Disability Awareness Badge and a very big Founders Day Celebration involving Pancakes and investitures and lots of parents. It was a great night where we invested many new members and ate pancakes!

March also involved a First Aid Course for the whole Group with everyone achieving level 1, 2, 3 or 4.

We took part in a Bag Pack at Morrisons raising nearly £400.

The Scouts have also been busy working on their Expedition Challenge award which was a Hike around the Matlock area of Derbyshire to discover its interesting bits. This took place over Easter 2015, and I must say they have done exceptional well, not getting lost and completing the tasks.



The Scouts are almost able now to meet a separate section, with this in mind we have split in to two, albeit small patrols and appointed Patrol Leaders and Assistant Patrol Leaders, this now gives us a structure to grow around. The Challenge is to turn these Patrols into groups of five to eight young people and open two new patrols, giving us a total of four. The Patrols have been named after the four original patrols from BP's Brownsea Island Camp, Bulls, Curlews, Ravens and Wolves, with the current active patrols being Ravens and Wolves.

We have had a massive year of Adventure with more to come . . .

Colin
Scout Leader

Long Whatton and Diseworth Scout Group
The Village People Explorer Scout Unit – Fridays 6.30 to 8.30 pm
at Long Whatton Methodist Church
Annual Report April 2014 to March 2015



EXPLORERS

Long Whatton and Diseworth
The Village People ESU

The Village People Explorer Scout Unit was formed in January 2003, by me, to serve the villages in the north of the district. Back then there were only three members who named the unit The Village People. The unit quickly grew to six. It used to meet on a Friday night and took it in turns to meet at Long Whatton and Shepshed, the unit went on to be 20 + strong, but the young people grew too old to be involved and shortly after our first District Explorer Germany Trip in 2009 the unit closed.

In 2013 we had started to grow our own Explorers, well there were a couple knocking around, so I called a couple of old parents who told me their young people had finished Scouting, they were disappointed with that. I invited them to hang around with us on Fridays and to see what could happen, and they did and as time moved on they brought their friends and I would say around September 2013 The Village People were back up and running.

The Badge for the ESU was designed by young people in late 2013, but it wasn't approved by the young people until late 2014 at which time they decided it was a good idea to get them which we did and we could afford it by then as well.



We currently have 12 Explorers, which is a good number for a unit, making it manageable and active.

But what have they really been up to . . .

. . . During the Easter period they got eggscited too with Egg and Spoon races, Egg Drops and Egg Catching, followed by one our regularly Archery sessions, which thanks to the Church we can now run there.

May saw a joint camp with Ashmount Scouts at Walesby Forest Scout Camp Site and an opportunity to take part in the 2014 Jamboree on the Trail, we also helped clear out the stores at the Church, which enabled a trailer full of rubbish to go, leaving room for the Archery kit and some of the gear out of the hall to be stored away.

The Explorers along with the Scouts took part in a Back to Basics Camp at Stonepit Wood Scout Camp site in Nottinghamshire. They were able to cook on fires, try out new recipes and sleep in Hammocks under tarps, it was a bit of a wet first day but it cleared up and we had lots of new experiences. We really enjoyed it and are looking forward to doing it again later this year.

The next part of the Explorers programme was about getting ready for Summer Camp; this was held at Willesley Scout Camp site in Ashby. We looked at Packing a Ruck Sack, Putting up Tents, Washing Hands and Brushing Teeth. The term finished with a Party Night for the whole group which involved lots of silly games and fun!

August saw another Silly Games Night which always amazes me that the young people actually have a go, I find them incredibly funny and it was also a last night of preparation before camp.



Summer Camp was at Willesley Scout Campsite at Ashby. This was a whole group camp and very enjoyable, it was great to see the Family of Scouting in operation and we had a very special visitor, Willi our German Scout Leader friend, it was great to see him and it is Willi's fault we are now planning Germany 2015. We also had a visit from the Group Scout Leader, Julie, from Ashmount Scouts and Ed who had been away working. So Summer Camp was a fabulous experience with I think 95% of the Group Members being involved. We took part in Shooting, Caving, Ariel Runway, Pioneering, Fires, Cooking, another opportunity to use Hammocks and a great opportunity to sleep in a German Black Tent!

All members also had the opportunity to take part in the Long Whatton Village Show, and we seemed to recruit a few people.

September saw the beginning of a New Term, so we started as we meant to go on; we made Mini Cross Bows from lolly pop sticks and shot matches into a fire in a vain attempt to light them. We also had a presence at Diseworth Village Show this month. As a group we had a go at Highland Mini Games and Archery, which is now a regular part of our programme. I nearly forgot there was a Pirates of the Caribbean Movie Night Sleep Over, with Fancy Dress and Pizza.

September also saw the start of the Duke of Edinburgh Award for our young people as a separate session, taking place from 8.30 to 9.30 pm, details of the success of this venture can be seen in a separate report.

The Explorers were now starting to have sessions separate to the other Sections; we started with an evening Cooking on Trangias and looking at Expedition Food followed by putting up Expedition Tents, Sedan Chair Racing and, LOL, Blind Football!

November we had a go at Indoor Fireworks, which was ok and the Unit attended Remembrance Service at Long Whatton. They visited the Climbing Tower in Loughborough and planned an Overnight Hike to Willesley Camp Site, (more about that in the DofE Section).

The Unit took part in Archery and a Dragons Den style competition of Smoothie making along with Cubs and Scouts.

December came to an end with Making Christmas Cards for the Old Folks in the Village, a Silly Games Night, which I like to throw in every so often for a laugh and a Group Ice Skating Trip to Nottingham, along with Ashmount Scouts.

After Christmas we had an unwanted present swap shop and a visit from the Super Sonic Car, the Bloodhound Project. We introduced some new crafts, Scented Candles and Tie Dying and we had some amazing results.



We had a very big Founders Day Celebration involving Pancakes and investitures and lots of parents. It was a great night where we invested many new members and ate pancakes!

The best bit about February was going on Radio Leicester and promoting our Germany Camp!

March also involved a First Aid course for the whole Group with everyone achieving level 1, 2, 3 or 4.

We took part in a Bag Pack at Morrisons raising nearly £400. Explorers also had a lot of Expedition planning to do to get them ready for their Easter Expeditions – Which they did! More about that in the DofE Section.



Colin
Explorer Scout Leader



Long Whatton and Diseworth Scout Group
Duke of Edinburgh Award Unit ESU – Fridays 8.30 to 9.30 pm at Methodist Church
Annual Report April 2014 to March 2015



September 2014 saw the demand for this session with 10 out of the 12 Explorers wanting to take part; we also have Jess our Cub Leader and Donna from Ashmount Scouts as Members too.

Of course the Young People started to discuss this a while before this but a quick straw poll suggested they wanted to take part and have the option of a separate session, so that's what happened and here is what they have achieved. . .

. . . the first thing that happen was explain how DofE works and what they have to do and once they were committed planning an overnight hike to Willesley in Ashby so we could access their skills.

Next, Trangias and Expedition food followed by Tents and how to put them up! A First Aid refresher, then Planning a Route Finally in mid-November the Hike, It was a bit cold and murky, but all of them survived and it a gave us the leaders an idea of what training was needed before the Easter Expeditions in 2015. They did ever so well, and we decide to have a break from DofE until after Christmas.

We spent the first few sessions planning the route and getting the route cards completed, we spent some time working out walking groups. We eventually ended up with two groups a Bronze Practice and a Silver Practice

March was spent completing there level 4 First Aid Badge, which made us more confident in let the groups free in Derbyshire. The Expeditions had been arranged around Matlock with stops at Spritewinter, Tansley Wood and Cromford Wharf for the second week of the Easter Holidays.

The Expeditions also included a Scout Challenge Hike in the same area so we had three walking groups out two for one night and one for two nights.



Long Whatton and Diseworth
The Village People ESU



The weather was great for the whole five days were away and the young people completed the hikes with no major issues, we were and are very proud of the groups and I am looking forward to the September Assessed Expeditions in the Staffordshire Moors, which the young people have already started to work on.

So we seem to have achieved a lot in a short period of time and I think they are going to well, and achieve they awards, but we all need to keep an eye on the other parts of the award that need completing too.

Colin
Explorer Scout Leader



Long Whatton - Financial Report - April 2014 to March 2015



**Long Whatton and
Diseworth Scout Group**

<u>Income</u>	<u>Bank</u>	<u>Cash</u>	<u>Total</u>
Weekly subs	292.00	1,475.70	1,767.70
Camp/ Activities Fees	3,785.00	1,543.65	5,328.65
Grants / Donations	1,854.41	5.50	1,859.91
Uniform sales	0.00	39.75	39.75
Membership Fees	1,630.00	196.00	1,826.00
Total Income	7,561.41	3,260.60	10,822.01
<u>Expenditure</u>	<u>Bank</u>	<u>Cash</u>	<u>Total</u>
Catering	1,322.86	350.79	1,673.65
Activities	1,460.55	103.40	1,563.95
Stationery / Books	56.01	18.41	74.42
Equipment	1,608.83	139.68	1,748.51
Postage	42.25	19.09	61.34
Fuel / Transport	970.56	62.18	1,032.74
Badges /Uniform	1,085.40	61.79	1,147.19
Chapel Repairs	240.00	0.00	240.00
Chapel Rent (6 months)	256.00	0.00	256.00
DofE	87.44	0.00	87.44
Membership fees	1,603.00	0.00	1,603.00
Leader Training	10.00	0.00	10.00
Refunds to Ashmount scouts	0.00	76.76	76.76
Total Expenditure	8,742.90	832.10	9,575.00
Bank b/f April 2014	398.09		
Cash b/f April 2014	36.36		Cash held at 31/03/15 9.86
Income	10,822.01		Barclays Bank Balance at 31/03/15 1,801.60
	11,256.46		1,811.46
Expenditure	9,575.00		Unpresented cheque 130.00
	£1,681.46		£1,681.46
<u>Fundraising / Grants / Donations / Refunds</u>			<u>Unpresented cheques</u>
			Hogwarts deposit £130.00
Morrisons Bag Pack	£394.33		
James Wise Charitable Fund	£200.00		Allocated Funds
Everards	£250.00		Hogwarts Camp £220.00
Gift Aid	£173.48		Germany Summer camp £589.33
Diseworth Village show 2014	5.50		Easter Expeditions £525.00
LW Village Show 2014	126.60		Village People Explorer Unit £39.78
Parish Council Grant	250.00		£1,374.11
LOPC - refund	60.00		
NWL Grant - Summer Camp 2014	400.00		Payments due
	£1,859.91		Chapel Rent £256.00

...EVERYDAY ADVENTURE